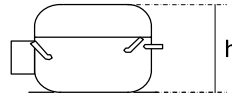


OPERATION:

Application:	L.B.P.	Max. Ambient Temp:	43°C
Refrigerant:	R600a	(1) Max. Steady Discharge Temp:	120°C
Operation:	Capillary	(1,2) Max. Peak Discharge Temp:	135°C
Cooling:	Static	Max. Steady Condensing Temp:	60°C
		(2) Max. Peak Condensing Temp:	70°C
		Max. Winding Temp:	130°C
		Max. Impurities:	30 mg
		Max.Total Compressor Water Content:	100 mg

COMPRESSOR:

Displacement:	5.6 cc	Oil Type:	Mineral
Bore:	21.10 mm	(4) Viscosity:	7 cSt
Stroke:	16.01 mm	Suction Muffler:	Semi-direct
(3) Net Wt:	8.4 kg		
Case Size:	h = 157.5 mm		
Oil Charge:	165 cc		



ELECTRICAL:

Power Supply:	220 - 240V	Motor Type:	RSCR
Voltage Limits:	187 - 264V	Locked Rotor Current:	4.9 / 2.1 A**
Frequency:	50 Hz		
Phase:	1 ph		
		Main Winding Resistance at 25°C:	37.7 Ω
		Start Winding Resistance at 25°C:	38.1 Ω

** Maximum current / Measured after 4 seconds

- (1) Measured 5cm. from the shell with insulated thermocouples
- (2) For transient conditions during 'Pull Down'
- (3) Net weight is with oil but without electrics
- (4) Measured at 40°C

For rated performance,

the suction line must be connected to the stub marked 'AS' on the attached drawing.

A run capacitor must be used with RSCR and CSR compressors.

ELECTRICAL COMPONENTS:

ECC Starting Device: K 100-xx
 (1) ZEM Starting Device: PTC- 7100D2 / 8100
 ZEM PTC Resistance: 14 Ω
 'Combo' PTC Resistance: 14 Ω
 Run Capacitor: 2.0 μF

-xx Protector short code

PROTECTORS:

PROTECTORS	BDG ¾	Combo	Electrica ¾	Texas ¾	Texas 4TM
Type	AE 23 BY x	C2-142 KFBYY xx	T 0647 / kk	MSP 319HK xxxx	4TM 142 KFBYY xx
Open °C	100 - 110 °C	100 - 110 °C	100 - 110 °C	100 - 110 °C	100 - 110 °C
Close °C	71 - 53 °C	70 - 52 °C	65 - 50 °C	70 - 52 °C	70 - 52 °C
U.T.C	0.80 A 70 °C	0.85 A 70 °C	0.80 A 70 °C	0.86 A 70 °C	0.85 A 70 °C
Time Check Current	3.65 A	3.8 A (5-15s)	3.40 A	3.40 A	3.8 A (5-15s)
Max. Current	8.0 A	9.2 A (2s max.)	7.0 A	9.2 A	9.2 A (2s max.)
Code (if any)	F0	2P	C3	V0	80

Alt. protectors: AF 23 BY x
 D2

PTC-71.. / 81.. and Combo are for Terminal Cover version only.

(1) BDG protector AF type is for use with PTC-71.. only, and PTC-71.. is only fitted with BDG protector.

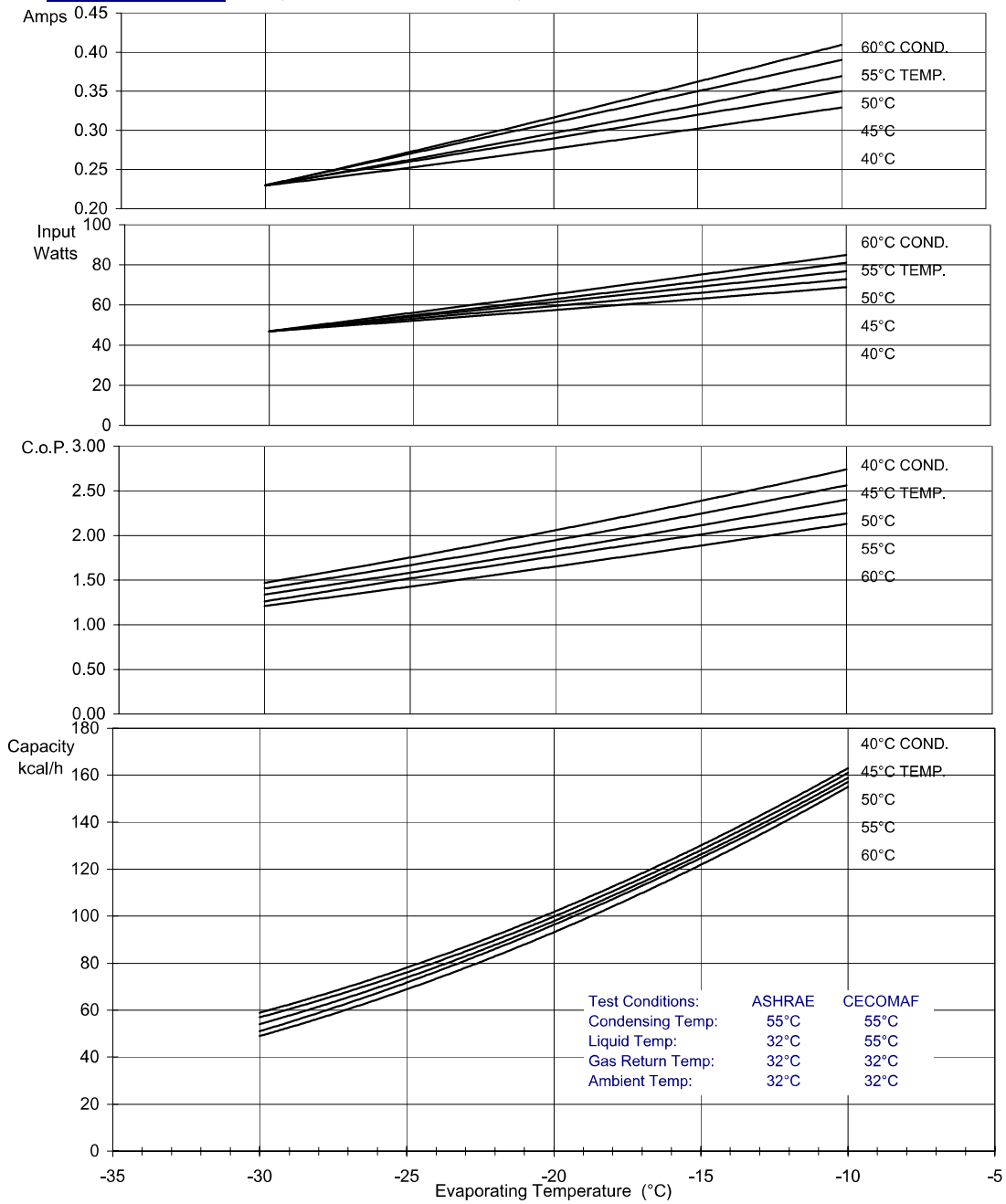


HTK55AA

PRODUCT SPECIFICATION

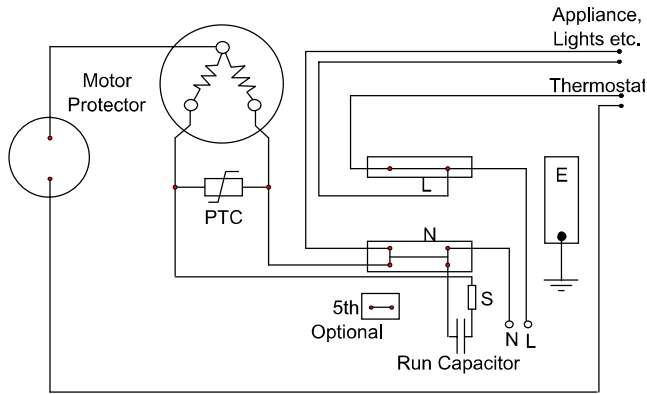
PERFORMANCE: (Graphs are at ASHRAE conditions)

220V 50Hz

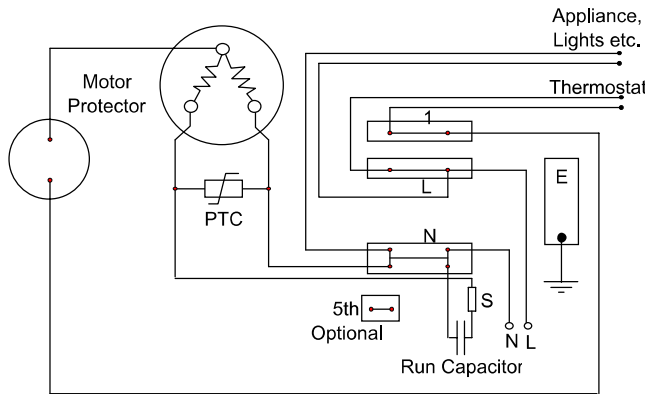


	Evaporating Temperature °C	-30	-25	-23.3	-20	-15	-10	
ASHRAE:	Capacity	Kcal/h	51	72	80	96	125	157
	C.o.P.	W / W	1.26	1.52	1.61	1.77	2.01	2.25
CECOMAF:	Capacity	W	49	69		92	119	150
	C.o.P.	W / W	1.04	1.25		1.46	1.65	1.85
	Input Power	W	47	55	58	63	72	81
	Current	A	0.23	0.27	0.28	0.31	0.35	0.39

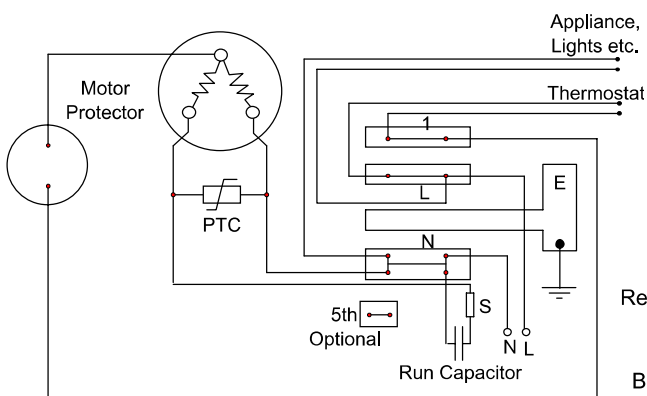
Circuit Diagram for ECC Terminal Board Standard Version



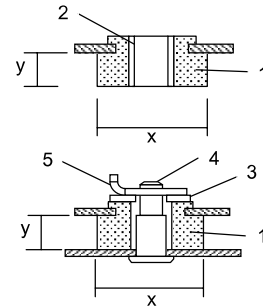
Circuit Diagram for ECC Terminal Board Frontal Version



Circuit Diagram for ECC Terminal Board Rast 5 Version



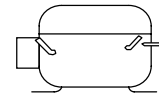
Mounting Accessories



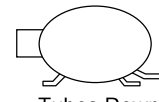
x = 26mm or 28,5mm
y = 9mm or 10,3mm
Other sizes available

1. Rubber grommet
2. Sleeve
3. Washer
4. Steel pin
5. Clip

Recommended Transport Positions when fitted into appliances



Upright



Tubes Down

Compressor Label

